



FEATURED PROJECT:

LOCKE SUPPLY COMPANY

PROJECT SUMMARY

Category: Distribution

Location: Oklahoma City, OK

Construction Type: New Construction

Square Feet: 1.5 Million

Implementation Partners: Butler Manufacturing™, Van Hoose Construction

Locke Supply Co., established in 1955, is an employee-owned plumbing, electrical, and HVAC distributor located in Oklahoma City, Oklahoma. With more than 200 stores in six states, Locke Supply required a distribution center that was large enough to support its extensive customer base. In collaboration with Van Hoose Construction and Butler Manufacturing™, Fleming Steel Erectors provided steel erection services for Locke Supply's new 45-acre, 1.5-million-square-foot distribution center in Oklahoma City.

The building utilizes a Butler LogistX system, comprising structural steel, Truss PurlinXT, and B-Deck, all integrated with concrete tilt wall panels. Fleming Steel Erectors safely battled harsh weather conditions to deliver this enormous project on budget, on time, and with zero safety incidents.

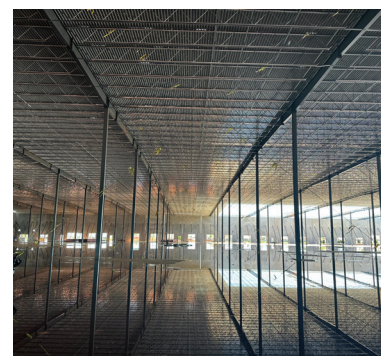
PROJECT SCOPE

- Butler LogistX® Building System
- Structural Steel
- Truss PurlinXT®
- B-Deck
- Concrete Tilt Wall Panels

RESULTS

- On Budget
- On Time
- Zero Safety Incidents

"We can't thank Jeff Van Hoose and the entire Van Hoose Construction team enough for selecting us as their steel erection trade partner on this historic project! When tackling projects of this size and scale, the need for clear communication, subcontractor coordination, safety, and attention to detail all increase exponentially. The VanHoose team was up to the challenge, and I couldn't be prouder of how our FSE crews performed. This was an all-around positive project experience that we will look back on fondly." - Justin Willett, Fleming Construction Group President



(405) 285-3851
www.fse-ok.com.com

Our Partners:

