

FEATURED PROJECT

CLEAR EDGE FILTRATION: 155K SQUARE FOOT CONSTRUCTION MOVES MANUFACTURING FACILITIES CLOSER TO US HEADQUARTERS

PROJECT SUMMARY

Business: Clear Edge Filtration

Category: Industrial + Manufacturing

Location: Tulsa, OK

Square Feet: 155,000

Project Type: Structural Steel Erection, Roofing

The Clear Edge Filtration facility in Tulsa, Oklahoma replaced two New York facilities, moving the company's US manufacturing operations closer to its corporate headquarters, which are also located in Tulsa.

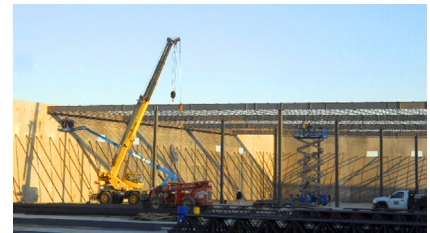
Employing approximately 180 people, the facility combines 22,500 square feet of office, lab, and lobby space with a manufacturing area that features overhead bridge cranes and overhead doors with docking equipment. Fleming Steel provided steel erector services as well as installation of the MR-24® Standing Seam Roofing.

PROJECT SCOPE

- Steel Erection - Pre-Engineered Metal Building
- MR-24® Standing Seam Roof System with No Limit Warranty

"Clear Edge Filtration is another example of the dynamic nature of today's pre-engineered metal buildings. This building is a great example of how FSE provides the structural steel framework for the companies that keep America's economy moving,"

-Paul Baker, FSE Oklahoma General Superintendent



(405) 509-5910 | www.fse-ok.com



FLEMING
CONSTRUCTION
GROUP

